

DYNAFLOW, INC. is an Applied Sciences Research and Development company. The capabilities of DYNAFLOW, INC. span the spectrum of software development, analysis, numerical simulation, experimentation, testing, and experience in:

Fluid Mechanics

Acoustics

Vibrations & Sound Generation

Dynamic Materials Properties

Stress Wave Propagation

Material Erosion due to Drop Impact

Fluid-Structure Interactions

Materials Science

Multiphase Flows

Material Erosion due to Cavitation

Underwater Explosions

Flow Visualization

Liquid & Air Filtration

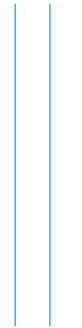
Computational Fluid Dynamics

Tomography

Waterjet Technology

Hydrodynamics

Software for Science



For more information on any of DYNAFLOW's capabilities contact us at:

DYNAFLOW, INC.

10621-J Iron Bridge Road

Jessup, MD 20794 U.S.A.

Phone: (301) 604-3688

Fax: (301) 604-3689

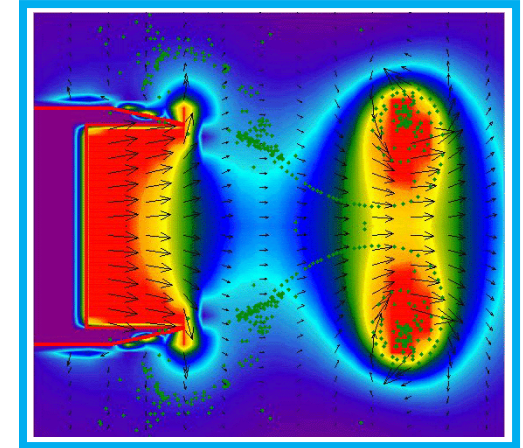
e-mail: info@dynaflow-inc.com

<http://www.dynaflow-inc.com>

DYNAFLOW, INC.
10621-J Iron Bridge Road
Jessup, MD 20794 U.S.A.

DF_CONTOUR[®]

A Contour and Vector Plotting
Scientific Software for
Data Visualization and Animation



DYNAFLOW, INC.
10621-J Iron Bridge Road
Jessup, MD 20794
ph: (301) 604-3688
fax: (301) 604-3689
e-mail: info@dynaflow-inc.com
<http://www.dynaflow-inc.com>



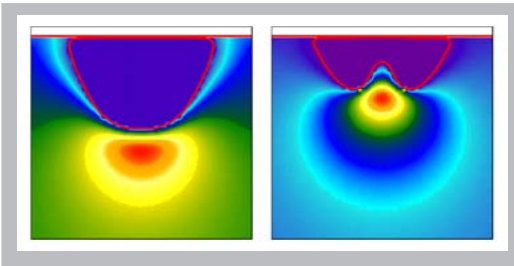
Scientists and engineers at DYNFLOW, INC. faced with the complexity and limitations of existing contour and vector plotting programs developed their own easy to use software package for visualizing 2D and 3D data: DF_CONTOUR[®].

DF_CONTOUR[®] generates publication ready visualization and animation graphs from numerical or experimental result data. At DYNFLOW, INC. we use this tool to represent results from laboratory experiments and to analyze the results of fluid dynamic programs we have developed such as 2DYNAFS[®] and 3DYNAFS[®].

Specifically designed to be user friendly, efficient and flexible, DF_CONTOUR[®] quickly allows the user to produce color graphic representation of the data in the format chosen.

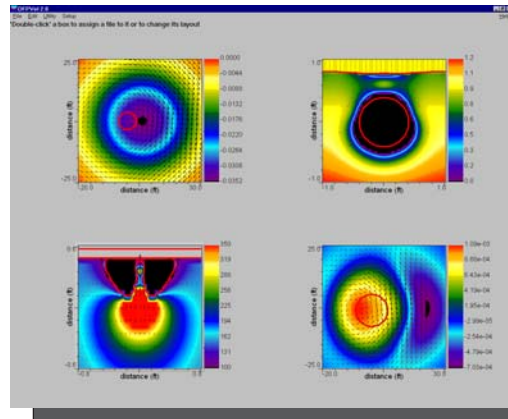
Formats include:

- Vector fields,
- Scalar fields,
- Shapes or curves,
- Markers,
- ..and much more.

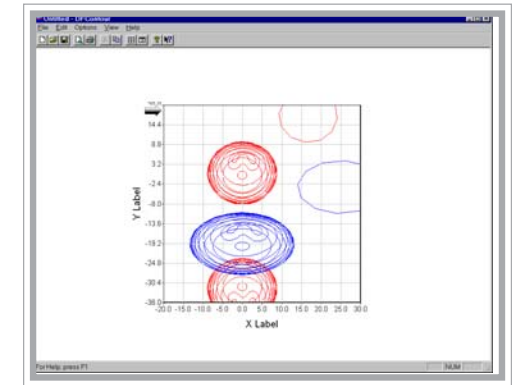


DF_CONTOUR[™] Features are:

- Up to 16 different data sets can be viewed simultaneously
- Sets of data can be displayed on a page in rows and columns
- Results are printed as displayed
- Simple point and click graph property modification



- On the fly selection of color palettes
- User defined color palettes in a very friendly, intuitive manner
- On the fly modification of scales
- Color scalar and vector contour mode
- Vector plotting mode
- Interpolation scheme to enhance poorly described data
- Animation movie of successive data files
- User control of all visual aspects of data sets
- Markers
- And much more...



DF_CONTOUR[®] recognizes a simple user generated ASCII file format for the representation of numerical data. Only a one-word descriptor is required at the beginning of each data set to let DF_CONTOUR[®] identify what type of data is being represented.

Upon receipt of DF_CONTOUR[®], you too can easily begin viewing and printing your data. There are no complicated menus or manuals to study and understand before you are up and running. DF_CONTOUR[®] is based on a totally intuitive concept and follows the user-friendly Windows[®] environment .

DF_CONTOUR[®], 2DYNAFS[®] and 3DYNAFS[®]
are © Copyrights 2004 of DYNFLOW, INC.
All Rights Reserved